



Welcome

**RETURN TO**  
**THE HIVE**

# VOCABULARY



# DEFINITIONS



- **Asynchronous Learning/Work:** Asynchronous work is completed by the student on their own. Common methods of asynchronous online learning include continuation of lesson activities, pre-recorded video content, virtual libraries, project work, and online discussion boards.
- **Asynchronous Day:** Students will continue to complete assigned work as well as have opportunities to engage with teachers and support staff.
- **Cohort:** The group of students that your child is assigned to. Students have been assigned to Cohort A or Cohort B based on your child's last name. Cohort A (A-K) Cohort B (L-Z) *\*See Bus Mailer*

# VOCABULARY DEFINITIONS



- **CSD Virtual Academy/Option:** The option for students to receive all of their instruction virtually through Synchronous/Simultaneous Instruction.
- **Eschool:** Statewide student information management system. All communication information is pulled from Eschool.
- **Home Access Center (HAC):** The data reporting system
- **Hybrid Schedule:** Operational bell schedule that allows a cohort of students to return to the building for in-person instruction while other students participate virtually.
- **PTSA:** See NHS Website <https://newarkptsa-1.memberhub.store/>

# VOCABULARY DEFINITIONS



- **Schoology:** The learning management system and the data recording system
- **Synchronous/Simultaneous Instruction:** In-person and virtual students receiving instruction at the same time.
- **Virtual Instruction/Learning:** Participation in a class through Zoom or other platform (Schoology Conferences).
- **Virtual Schedule:** The schedule that we are following now
- **Zoom:** Web based meeting platform
- Memorization: \*Not Necessary



# FROM VIRTUAL TO HYBRID



## A General Overview:

- We will remain in the current schedule until 11/13.
- Students in Hybrid Cohort A will attend in person learning on Mondays and Tuesdays.
- Students in Cohort B will attend in person learning on Thursdays and Fridays.
- These cohorts have been developed with social distancing requirements both in the classroom and on the school bus.

# FROM VIRTUAL TO HYBRID



## A General Overview:

### Virtual Academy:

- Students in the Virtual Academy will remain in the Academy for the duration of the school year.

### Hybrid Learning

- Hybrid Learning Cohorts are complete. Due to the required Health and Safety protocols, we cannot accommodate changes to your child's cohort. These cohorts have been developed with social distancing requirements both in the classroom and on the school bus. If you determine that the Hybrid model is not the best option for your child(ren), you can request to enroll in the Virtual Academy by joining the wait list.

# FROM VIRTUAL **TO** HYBRID



## Timeline:

- Monday, **November 16<sup>th</sup>**: Hybrid Bell Schedule Begins
- Monday, **November 16<sup>th</sup>**: 9<sup>th</sup> grade Cohort A 1<sup>st</sup> day
  - (1<sup>st</sup> time 9<sup>th</sup> Graders only)
- Thursday, **November 19<sup>th</sup>**: 9<sup>th</sup> grade Cohort B 1<sup>st</sup> day
  - (1<sup>st</sup> time 9<sup>th</sup> Graders only)
- Wednesday, **November 25<sup>th</sup>-27<sup>th</sup>**: Schools Closed
- Monday, **November 30<sup>th</sup>**: All Students Cohort A
- Thursday, **December 3<sup>rd</sup>**: All Students Cohort B



# CALENDAR



	MON	TUES	WED	THURS	FRI
<b>Current NHS Virtual Schedule</b>	<b>2-Nov</b>	<b>3-Nov</b>	<b>4-Nov</b>	<b>5-Nov</b>	<b>6-Nov</b>
	CLOSED: Grading Day	CLOSED: Election Day	Virtual Instruction: 8-3:30	Virtual Instruction: 8-3:30 NHS: Info. Night	Virtual Instruction: 8-3:30
	<b>9-Nov</b>	<b>10-Nov</b>	<b>11-Nov</b>	<b>12-Nov</b>	<b>13-Nov</b>
	Virtual Instruction: 7-2:30	Virtual Instruction: 8-3:30	CLOSED: Veterans Day	CLOSED: Parent Conferences	CLOSED: Parent Conferences
<b>Hybrid Schedule</b>	<b>16-Nov</b>	<b>17-Nov</b>	<b>18-Nov</b>	<b>19-Nov</b>	<b>20-Nov</b>
	9 <sup>th</sup> - Cohort A	9 <sup>th</sup> - Cohort A	Asynchronous Schoolwork & Virtual Support	9 <sup>th</sup> - Cohort B	9 <sup>th</sup> - Cohort B
	<b>23-Nov</b>	<b>24-Nov</b>	<b>25-Nov</b>	<b>26-Nov</b>	<b>27-Nov</b>
	9 <sup>th</sup> - Cohort A	9 <sup>th</sup> - Cohort A	CLOSED: Thanksgiving	CLOSED: Thanksgiving	CLOSED: Thanksgiving
	<b>30-Nov</b>	<b>1-Dec</b>	<b>2-Dec</b>	<b>3-Dec</b>	<b>4-Dec</b>
All Grades: (9 <sup>th</sup> -12 <sup>th</sup> ) - Cohort A	All Grades: (9 <sup>th</sup> -12 <sup>th</sup> ) - Cohort A	Asynchronous Schoolwork & Virtual Support	All Grades: (9 <sup>th</sup> -12 <sup>th</sup> ) - Cohort B	All Grades: (9 <sup>th</sup> -12 <sup>th</sup> ) - Cohort B	

# ATTENDANCE



## In-School Attendance

Attendance will be taken by the classroom teacher when students are scheduled to be “in-school.”

Attendance Code	Meaning
PH	<b>Present Hybrid</b> - Students were present during their assigned Cohort day.
PS	<b>Present Synchronous</b> - Students were present during their assigned Cohort day. (Include Virtual Option Cohort)
PA	<b>Present Asynchronous</b> - Students illustrate evidence of completing online work during remote days due to illness
AE	<b>Absent Excused</b> - Students were not present during their assigned Cohort day OR have not illustrated evidence of completing or attempting online work during remote days. A note was received from parent/guardian to explain the absence.
AU	<b>Absent Unexcused</b> - Students were not present during their assigned Cohort day OR have not illustrated evidence of completing or attempting online work during remote days. No note was received from parent/guardian to explain the absence.

# SAFETY, HEALTH,



# WELLNESS



- Students and staff are to complete the **Home Health Survey** each morning prior to the start of school (CSD Website). If you answer YES to any of the questions below, DO NOT send your child to school and call your child's school nurse and primary care provider.

## Home Health Screening Tool:

1. Has your student been in direct contact with a person who is Positive for COVID-19 in the past 2 weeks? No / Yes (If yes, date of contact \_\_\_\_\_)

If less than 2 weeks, please exit the building and contact your primary healthcare provider. If more than 2 weeks, proceed to question #2.

2. In the last 48 hours, has your student had any of the following NEW symptoms? (Fever of 100.4 (38C) or above \* Trouble breathing \* Muscle aches \* Shortness of breath or wheezing (not asthma related) \* Chills or repeated shaking with chills \* Loss of taste or smell, or change in taste \* Nausea, vomiting, or diarrhea \* Sore throat \* Headache \* Cough \* None of the above)

If you answer "YES" to any of the previous questions, please keep your student home and call your primary care physician.

- **Face coverings are required for all students.** Face coverings must be worn on the bus and throughout the school building as directed. **Every student should bring their own mask each day.** **Safety Violation:** Inappropriate Behavior (Student Manual)

# **SAFETY, HEALTH,** **WELLNESS**



- **Assigned Seats**
- **Physical distancing** guidelines will be followed with at least 3' separation in classrooms with face coverings.
- **All meals will be packaged as “grab and go.”**
- There will be **no volunteers** permitted in school buildings during the hybrid return.
- **One-way traffic**
- **No field trips**
- **There will be no large group school activities**
- On September 17, 2020, The State Board of Education, voted to approve fall athletics. **A comprehensive Return to Athletics Plan has been established and vetted by the Delaware Division of Public Health.**

# SAFETY EXPECTATIONS: MASKS



## DO choose masks that



Have two or more layers of washable, breathable fabric



Completely cover your nose and mouth



Fit snugly against the sides of your face and don't have gaps

## DO NOT choose masks that



Are made of fabric that makes it hard to breathe, for example, vinyl




Have exhalation valves or vents, which allow virus particles to escape



Are intended for healthcare workers, including N95 respirators or surgical masks

# SCHEDULE



 <b>Newark High School</b> <b>Hybrid Schedule</b>			Cohort A		Cohort A		Asynchronous WEDNESDAY	Cohort B		Cohort B	
			MONDAY		TUESDAY			THURSDAY		FRIDAY	
			In-person Instruction	Virtual Instruction	In-person Instruction	Virtual Instruction		In-person Instruction	Virtual Instruction	In-person Instruction	Virtual Instruction
Simultaneous Instruction (In-person & Virtual)	7:05 am	8:25 am	A1	B1	A2	B2	8:00-3:30: Academic Support & Curriculum Assistance	B1	A1	B2	A2
	8:31 am	9:36 am	A3	B3	A4	B4		B3	A3	B4	A4
	9:42 am	10:47 am	A5	B5	A6	B6		B5	A5	B6	A6
	10:53 am	12:05 pm	A7	B7	A8	B8		B7	A7	B8	A8
Virtual	1:30 pm	2:30 pm	Academic Support				12:10-12:55: GLA	Academic Support			

Monday, November 16, 2020 9th grade Cohort A 1st day

Thursday, November 19, 2020 9th grade Cohort B 1st day

Monday, November 30, 2020 All Grades: (9th-12th) Cohort A

Thursday, December 3, 2020 All Grades: (9th-12th) Cohort B

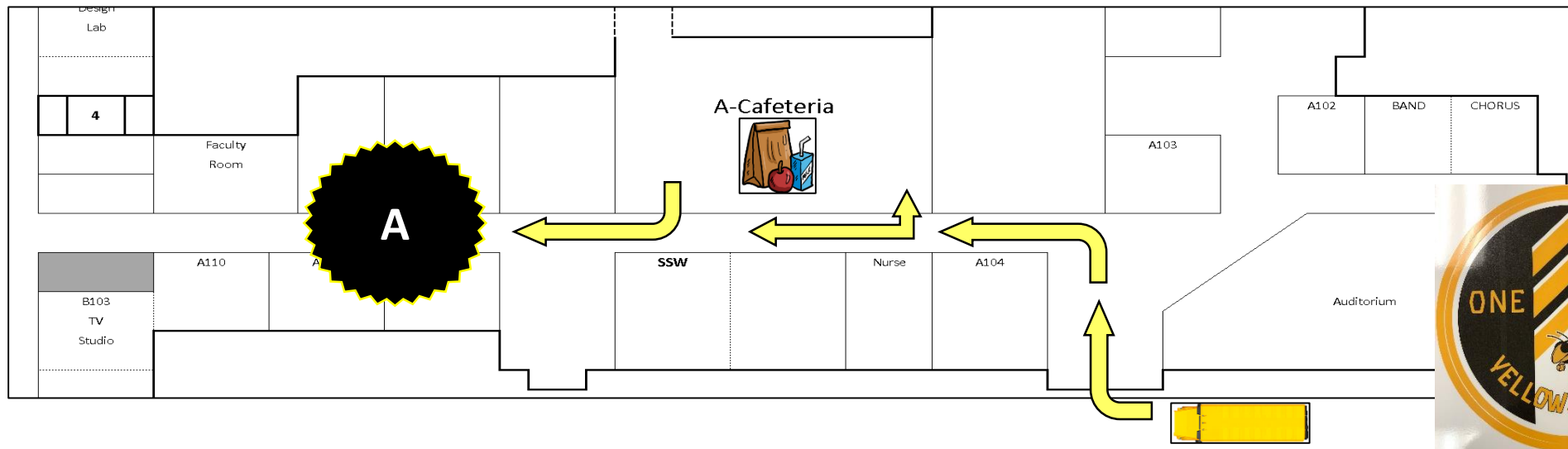
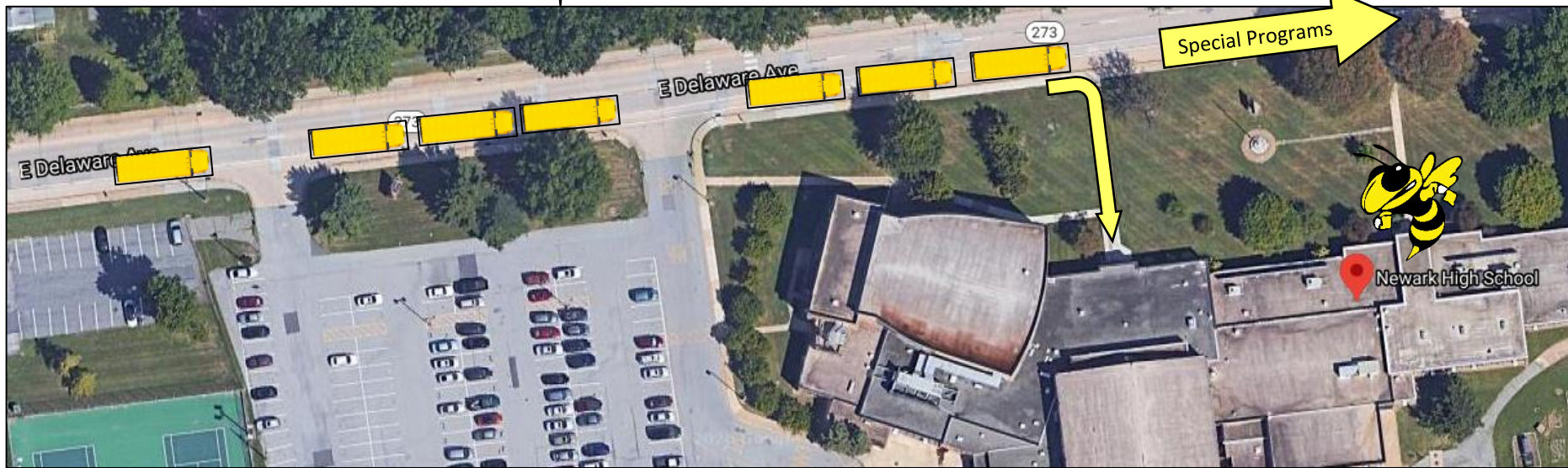
# SCHEDULE



			Cohort A	Cohort A	Cohort B	Cohort B
			MONDAY	TUESDAY	THURSDAY	FRIDAY
In-Person & Remote Instructional Schedule	7:05	8:25	A1	A2	B1	B2
	8:31	9:36	A3	A4	B3	B4
	9:42	10:47	A5	A6	B5	B6
	10:53	12:05	A7	A8	B7	B8
Dismissal & Travel	12:10	1:25	Lunch, Plan, Travel, etc.			
Virtual Support	1:30	2:30	Office Hours/Academic Support			

			WEDNESDAY							
			ELA	SS	Math	Sci	WL	CTE	Arts	PS
Asynchronous Schoolwork & Virtual Support	8:00	8:50	AAS			CPS	CPS	AAS	CPS	CPS
	8:54	9:44	CPS			AAS			AAS	
	9:48	10:38		CPS	AAS					AAS
	10:42	11:32		AAS	CPS		AAS	CPS		
	11:36	12:06	Lunch							
CPS = College Prep Support	12:10	12:55	Grade Level Academy (Xello, RTI, CA, MTSS, etc.)							
	1:00	2:00	Small Group Instruction/Office Hours/PLCs							
AAS = Advanced Academic Support	2:05	2:55	Clubs/Office Hours/PLCs							
	3:00	3:30	Office Hours/PLCs							

# ARRIVAL BREAKFAST

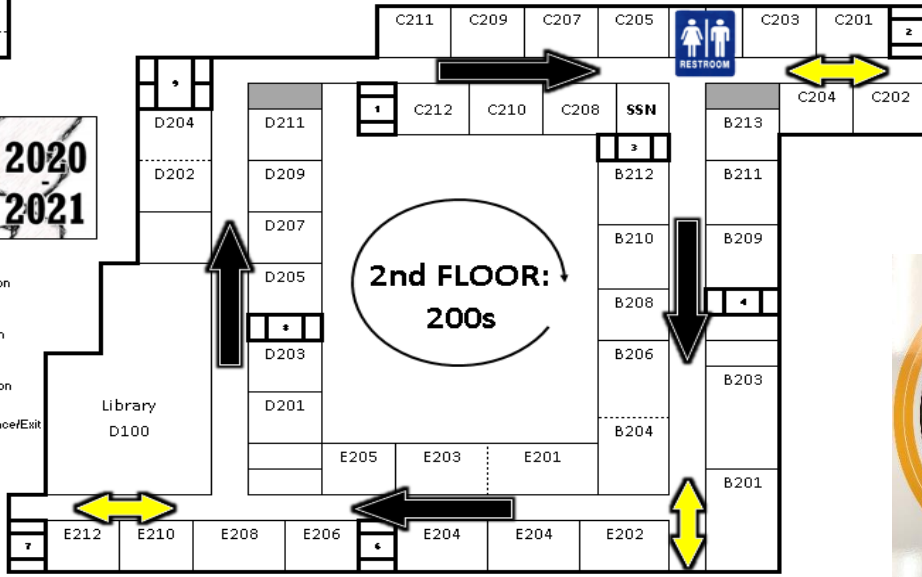
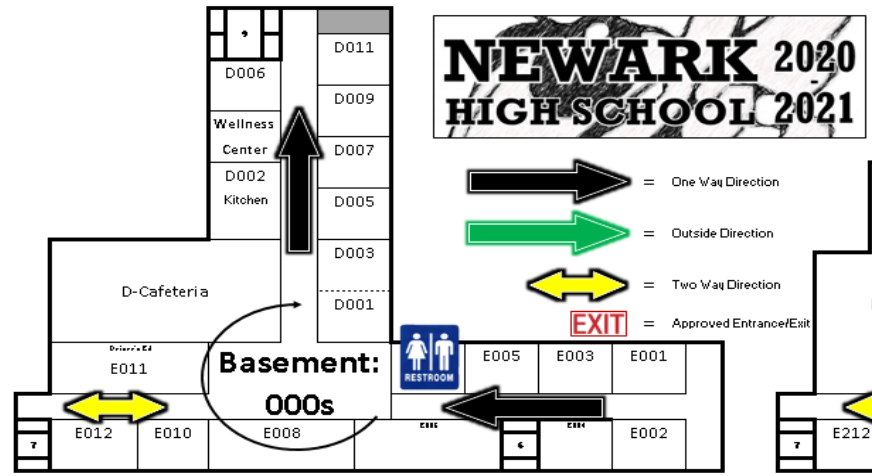
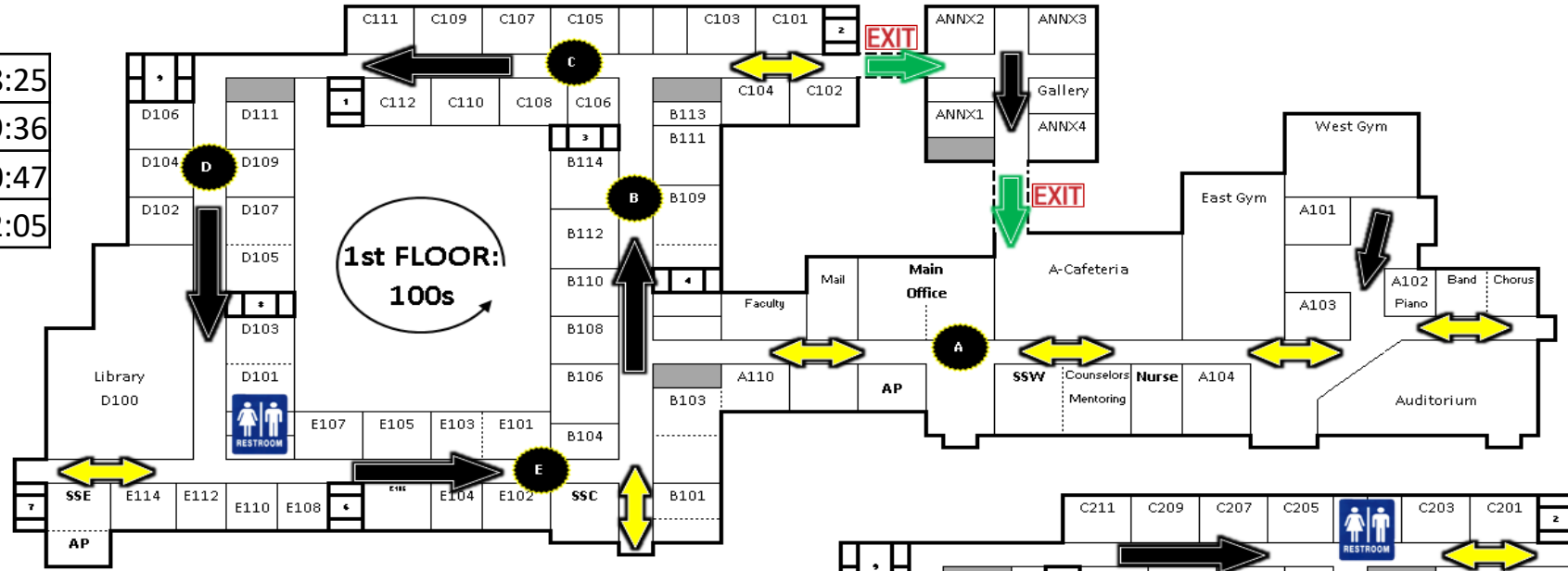




# TRANSITION DIRECTIONS



7:05	8:25
8:31	9:36
9:42	10:47
10:53	12:05

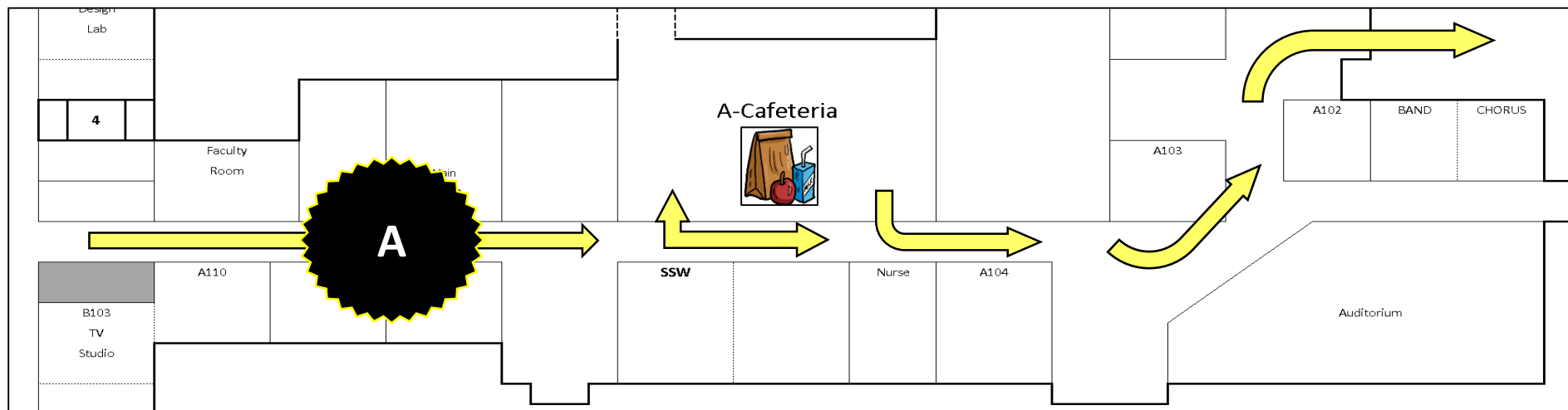


**NEWARK 2020  
HIGH SCHOOL 2021**

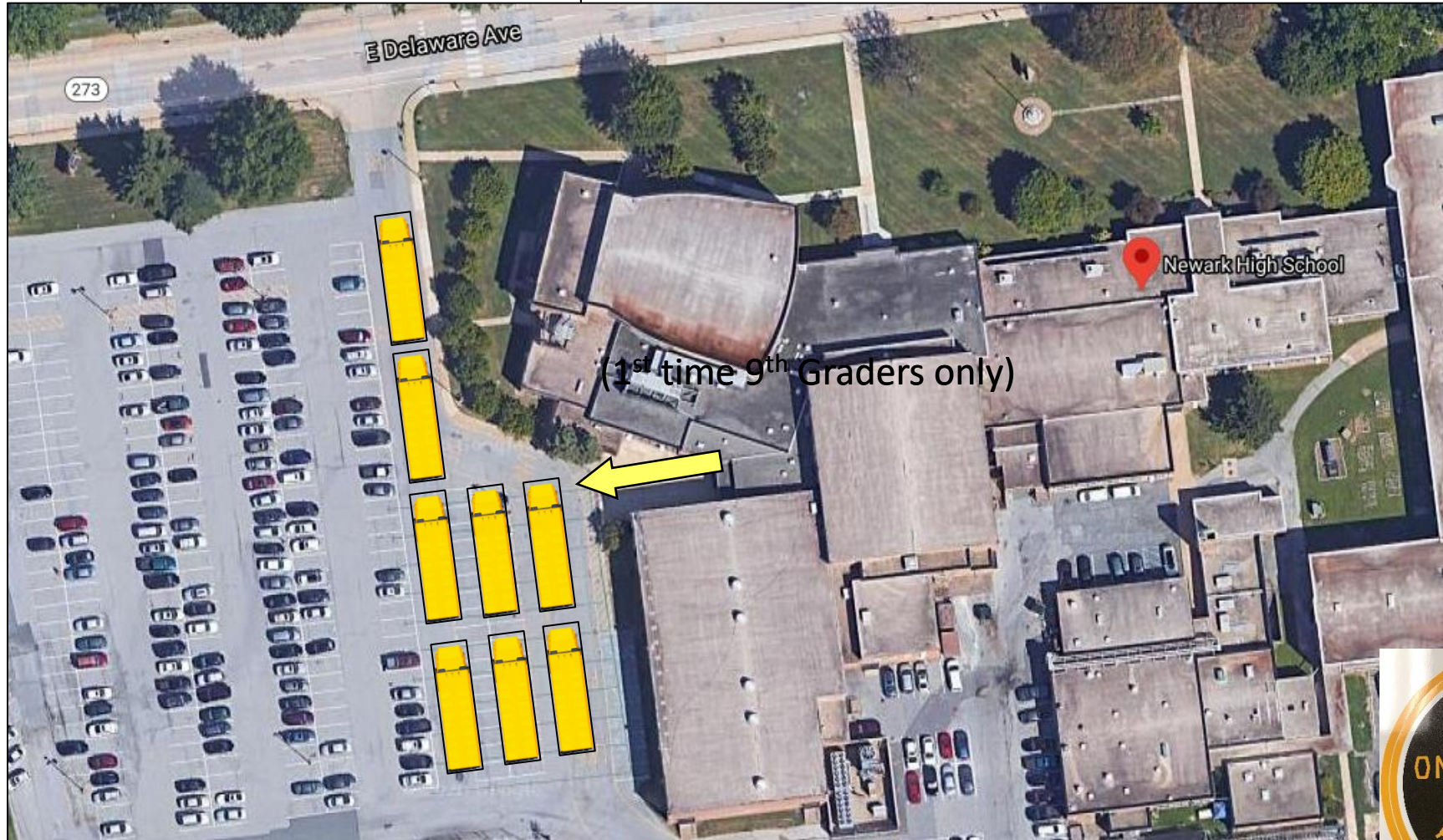
- = One Way Direction
- = Outside Direction
- = Two Way Direction
- = Approved Entrance/Exit



# DISMISSAL LUNCH



# DISMISSAL LUNCH



(1st time 9th Graders only)



# **SIMULTANEOUS INSTRUCTION**

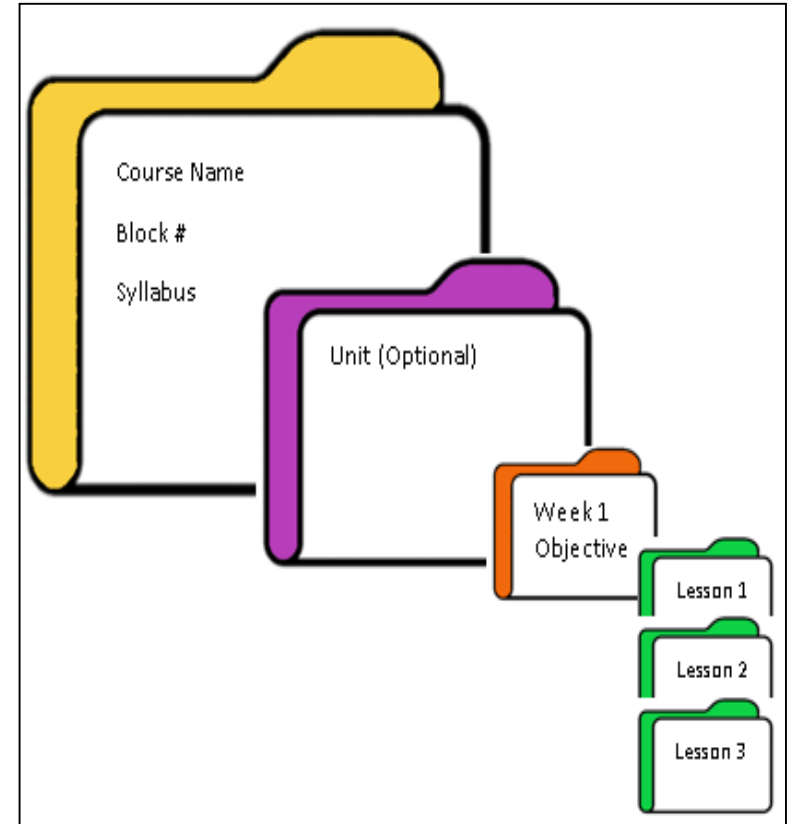


- Not a return to the 'old way' of doing things
- Maintain our current virtual instructional practices
- Minimize/eliminate paper use
- Allows for maximum consistency and flexibility if pandemic transitions occur (Virtual to Hybrid to All Remote, etc.)

# SIMULTANEOUS INSTRUCTION



- Layered Folder System:
- The top folder should contain the course name, block number, and syllabus as its “cover”.
- The next folder should be the overall unit or theme. The unit/theme is then broken down into your instructional weeks.
- The cover of each week folder should list the objective of the lessons
- Within the ‘week folder’ should be the individual lesson folders.








# SIMULTANEOUS INSTRUCTION



## NHS Instructional Model

- **Introduction & statement of the learning Objective**
- **Vocabulary**
- **Whole Group**
- **Small Group** (varies during virtual)
- **Closure**
- **Assessment: Formative**

	Objective: Stinger
	Vocabulary
	Whole Group Instruction
	Small Group Instruction
	Closure
	Assessment (Formative)
	Recorded Directions
	Additional Resources

# **SIMULTANEOUS INSTRUCTION**



- **Google Suite** (w/kami extension)
- Digital Collaboration Tool: **Flipgrid**
- Digital Interactive Presentation Tool: **Pear Deck**
- Digital Screen Recording Tool: **Screencastify**
- Digital Bulletin board: **Padlet**
- Digital Synchronous Learning Platform: **Schoology Conference** or **Zoom**
- **Savvas Learning** (ELA & Math)

# TECHNOLOGY SUPPORT



## TECHNOLOGY SUPPORT TEAM

If you are experience issues with your district technology please contact our technology team.

**9<sup>th</sup> & 10<sup>th</sup> Grade: Mr. Duffy**  
john.duffy@christina.k12.de.us

**11<sup>th</sup> & 12<sup>th</sup> Grade: Ms. Valdez**  
samantha.valdez@christina.k12.de.us

**Technology Team Lead:**  
**Mr. Salandria**  
ryan.salandria@christina.k12.de.us

**Newark High School**  
2020 Best High School

Home > [Homepage](#)  
[Return to Headlines](#)

**NHS TECHNOLOGY TEAM**

The Newark High School Technology Team is located in the West Gym lobby. Fill out a tech ticket and your issue will be responded to quickly.

<https://docs.google.com/forms/d/1Tc3...>  
Newark High School Technology Team

### NHS Technology Student Ticket

Name:  
Your answer \_\_\_\_\_

Date:  
Date  
mm/dd/yyyy

Email:  
Your answer \_\_\_\_\_

Are you experiencing and issue with any of the following:

- Screen
- Keyboard

Monday and Thursday afternoon in the West Gym lobby. Also available as well and voicemail's

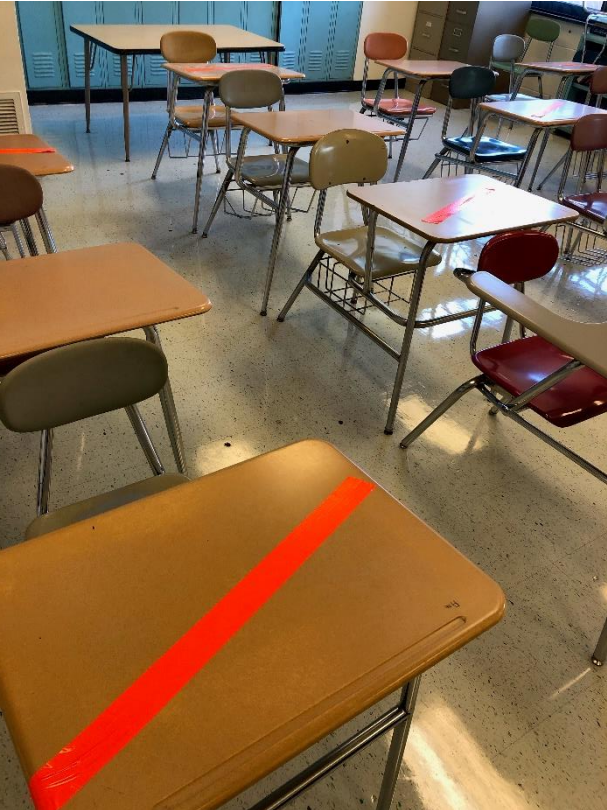


# CLEANING

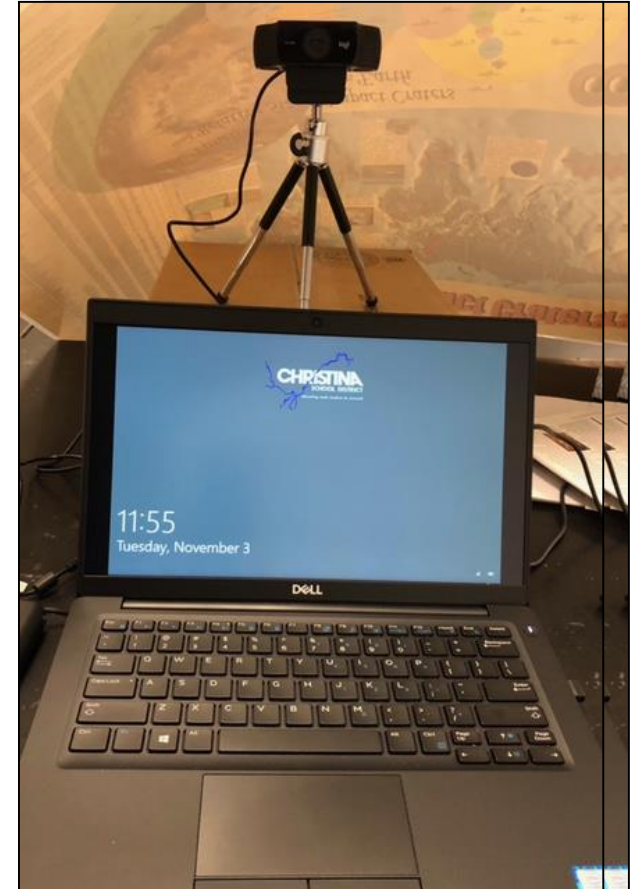
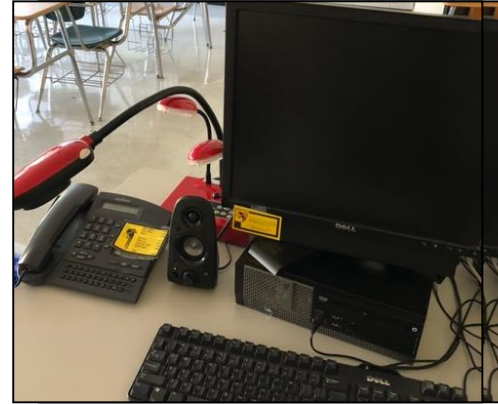
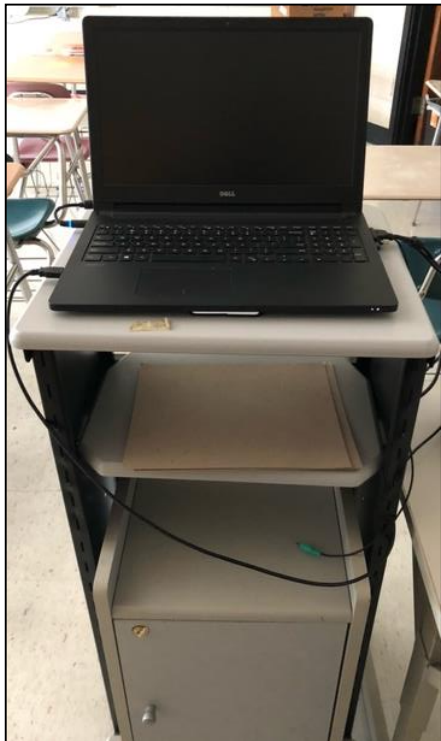
- Increased frequency of cleaning and the addition of responding to a presumed or positive COVID case.
- All of the desks have been treated with Bio-Protect which protects against virus and bacteria for 90 days.
- The cleaning products used:
  - Clean by Proxy – all-purpose everyday cleaner
  - Bio Renewables Glass Cleaner – glass cleaner
  - Damp Mop – no-rinse floor cleaner
  - Halt – one-step cleaner, bactericidal, virucidal, mildewcidal, fungicidal disinfectant
  - Flex Wipes (disinfectant wipes) – one-step disinfectant cleaner
  - Dutrion Tablets – chlorine dioxide tablet used for presumed & positive COVID case (COVID kill time of 2 minutes)



# CLASSROOM SEATING



# INSTRUCTIONAL TECHNOLOGY



# IN PROCESS



- Instructional Integration
- Student Laptops & Headphones
- Supplies & Materials
- Restroom External Monitoring
- Snack
- Supplies
- Mask Breaks

**THANK YOU**

[Aaron.Selekman@Christina.k12.de.us](mailto:Aaron.Selekman@Christina.k12.de.us)